



11811 S. Sunset Drive, Suite 2500
Olathe, Kansas 66061-7061
913.715.8500
FAX: 913.715.8501

May 21, 2010

Bill Ebel
Director, Planning and Development Services
City of Overland Park
8500 Santa Fe Drive
Overland Park, KS 66212

RE: City's Consent to the Enlargement of Consolidated Main Sewer District
(Meadows Of Mills Farm 2nd Plat)

Dear Mr. Ebel:

A petition has been received by our office for a sewer district enlargement in the general vicinity of 165th and Quivira Road. Before this petition can be presented to the Board of County Commissioners to enlarge this district, we are required to obtain the City's consent, as this area falls within the corporate limits of Overland Park.

Enclosed is a proposed resolution of "City's Consent" and map of the proposed enlargement area which we would like to have presented to the City Council for consideration. Please place these items on their agenda for the next regularly scheduled meeting.

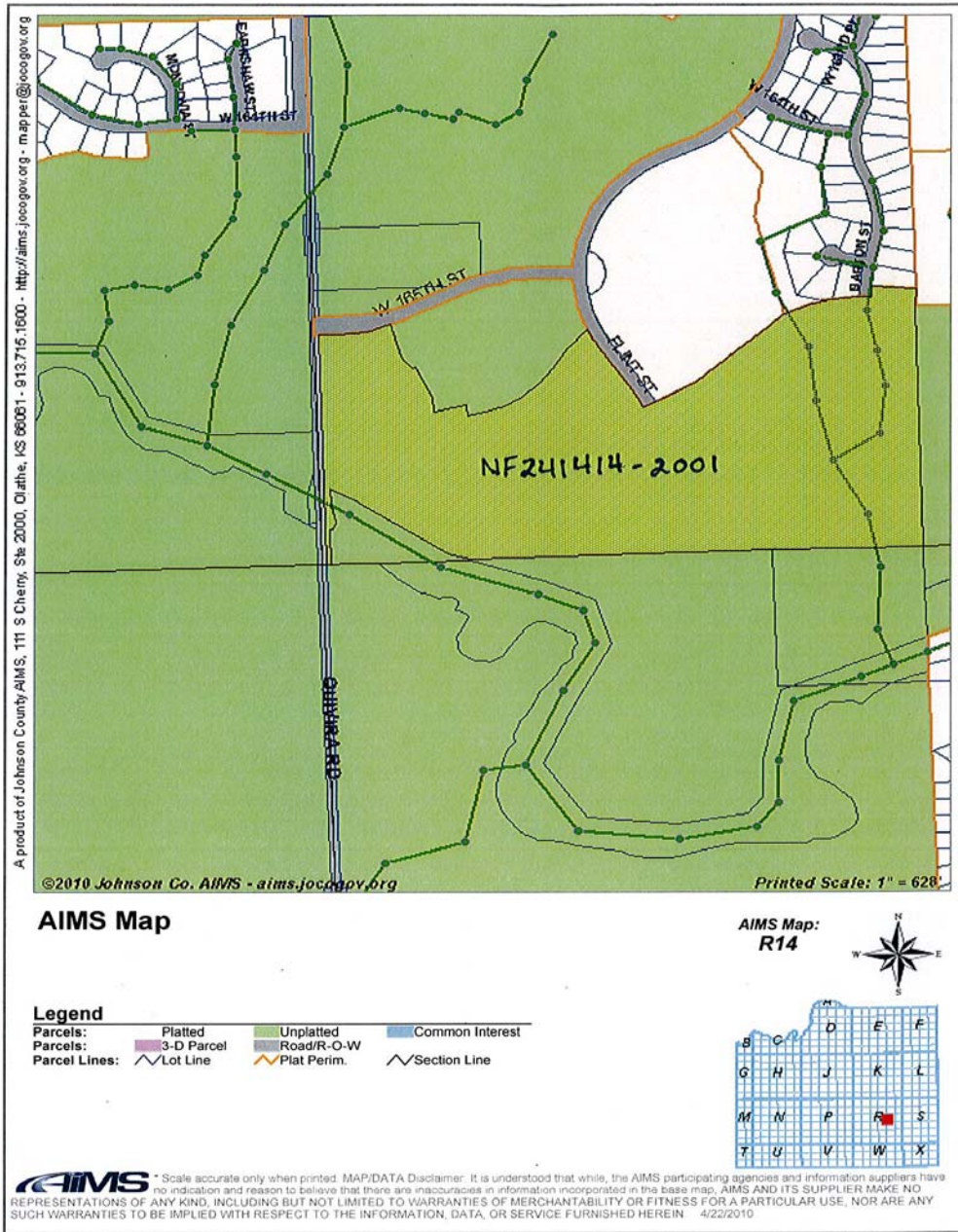
When approved, please return the signed resolution for our records at your earliest convenience. If you need any additional information you can contact me at any time.

Sincerely,

A handwritten signature in black ink that reads 'Linsey Brashears'.

Linsey Brashears
Engineering Technician
(913) 715-8557

Enclosures



<http://ims.jocogov.org/imsutil/AIMS2Print.asp?name=AIMS2&Cmd=print&proparc=on&...> 4/22/2010

Legal Description: 14-14-24 S 1/2 SW1/4 EX 8.08 AC EX 2.411 AC & EX 1.81 AC LYG WITHIN SD & EX 1.00 AC PLATTED & EX 8.6331 AC LYG WITHIN SD 58.0659 ACS M/L

Exhibit "A"