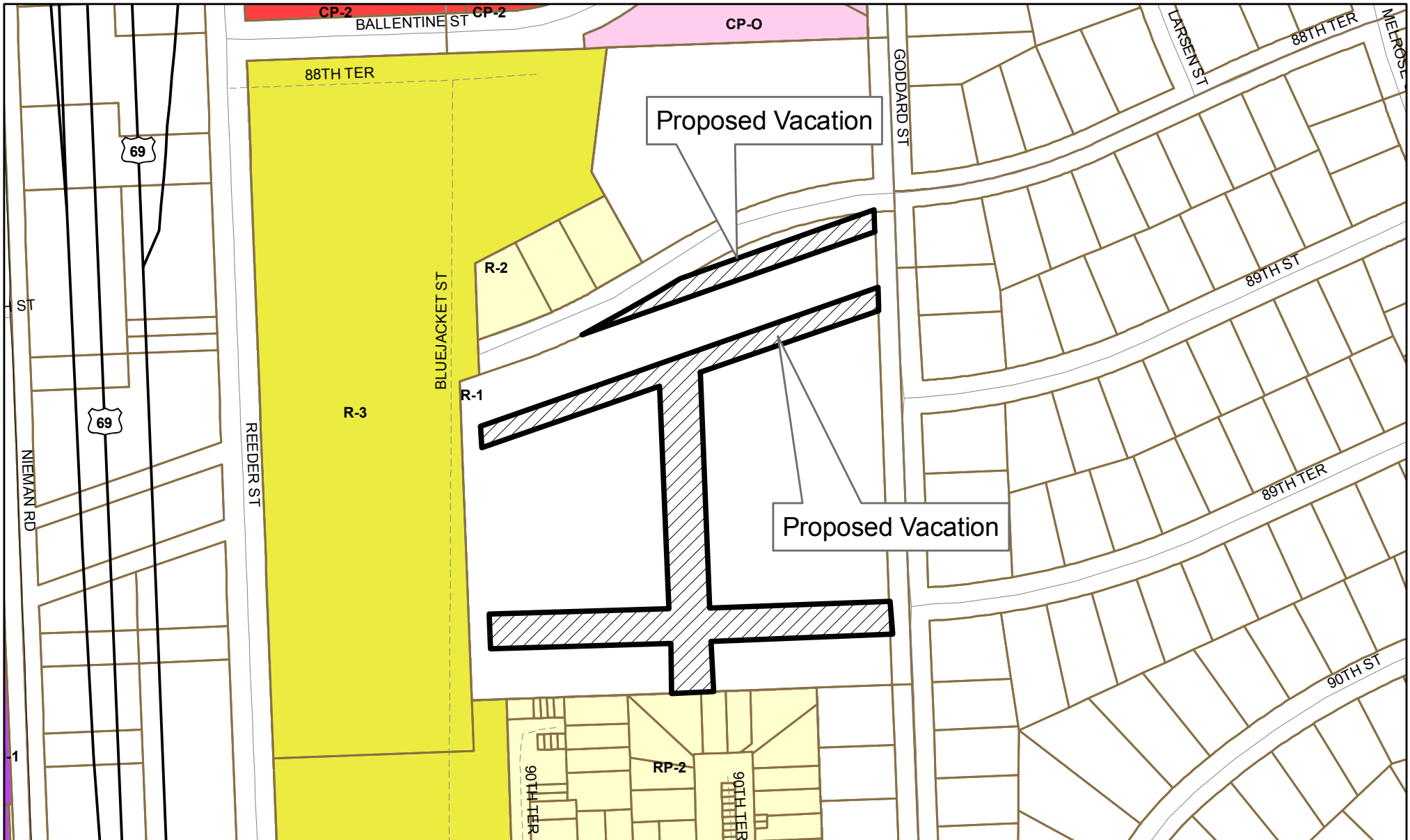


# Right-Of-Way Vacation 2010-00001

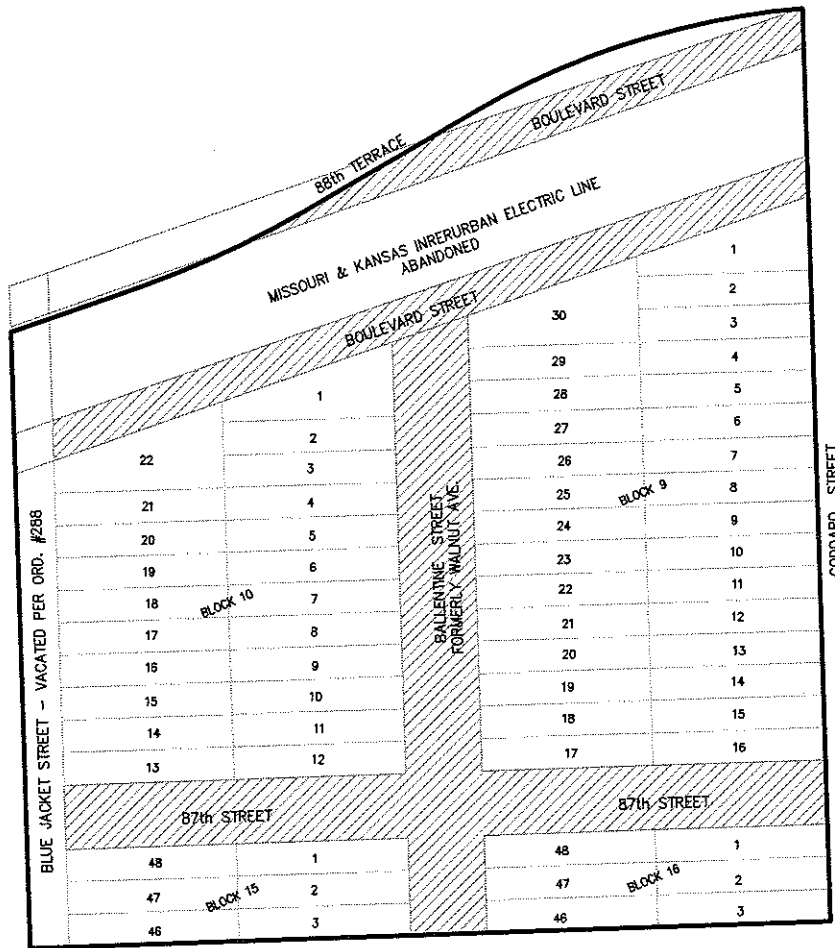


**OVERLAND PARK**  
K A N S A S

ABOVE AND BEYOND. BY DESIGN.

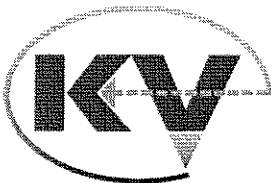
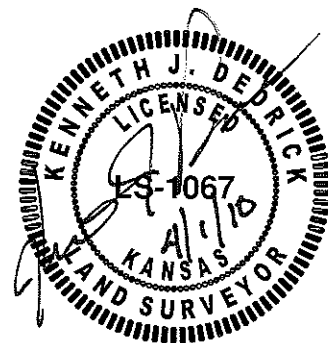
4/27/2010

1 inch = 200 feet



**DESCRIPTION:**

ALL OF BALLENTINE STREET (FORMERLY WALNUT) LYING NORTH OF THE SOUTH LINE OF LOTS 3 AND 46, BLOCK 15 AND NORTH OF THE SOUTH LINE OF LOTS 3 AND 46, BLOCK 16, AND SOUTH OF 88th TERRACE, ALL OF BOULEVARD STREET LYING EAST OF VACATED BLUE JACKET STREET (EXCLUDING ANY PART IN PLATTED 88th TERRACE) AND ALL OF 87th STREET AS SHOWN ON THE PLAT OF SUNSET HEIGHTS IN PLAT BOOK 4 AT PAGE 15, JOHNSON COUNTY RECORDER OF DEEDS OFFICE.



**KAW VALLEY ENGINEERING, INC.**  
 14700 W. 114th TER., LENEXA, KANSAS 66215  
 tel (913) 894-5150 fax (913) 894-5977  
 e-mail: kv@kveng.com



EXHIBIT "A"  
 PROJECT #: C10S5213  
**APACHE ELEMENTARY SCHOOL**

OVERLAND PARK, KANSAS  
 VACATION

SCALE: NONE

DATE: 3/31/10

SHEET 1 OF 1